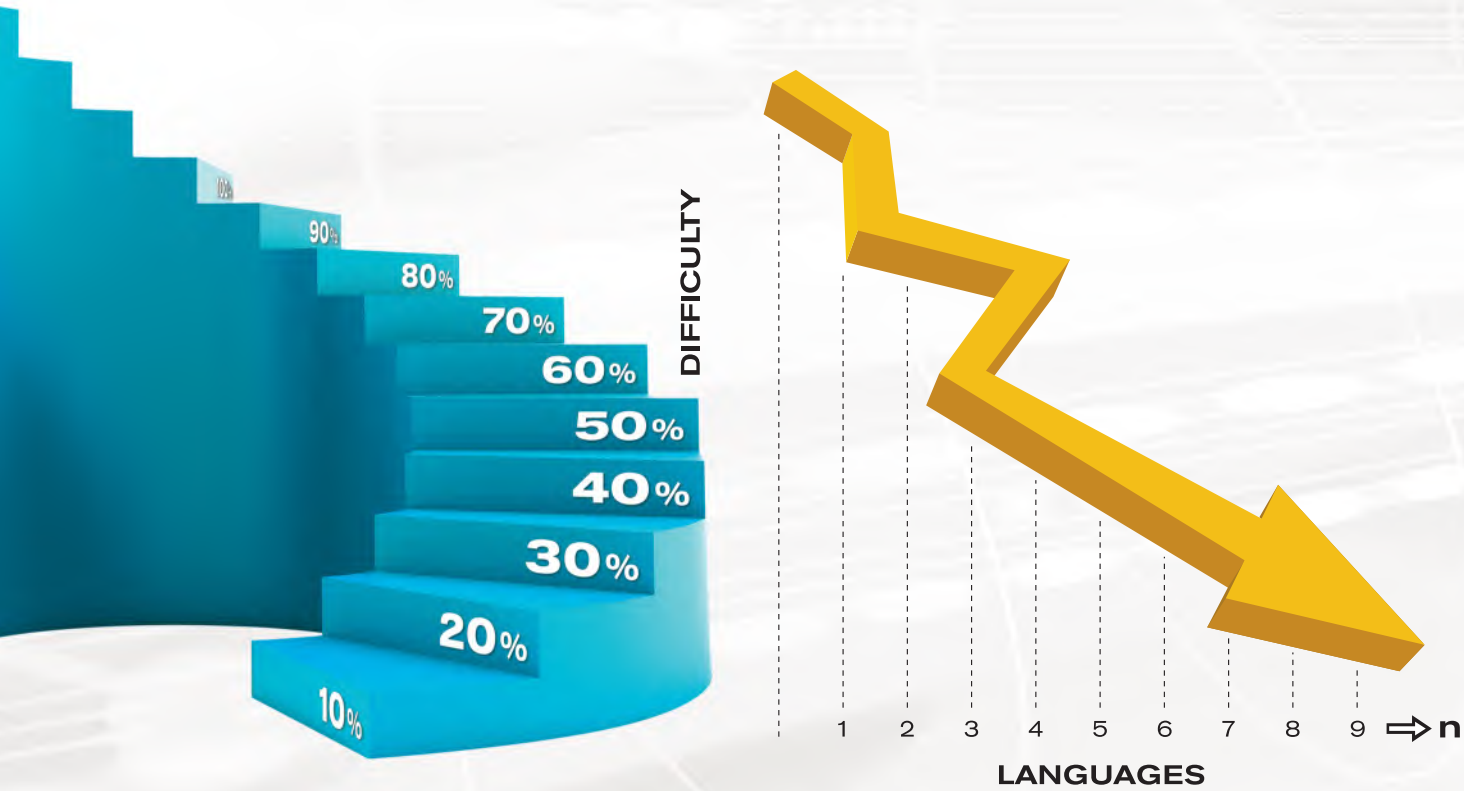
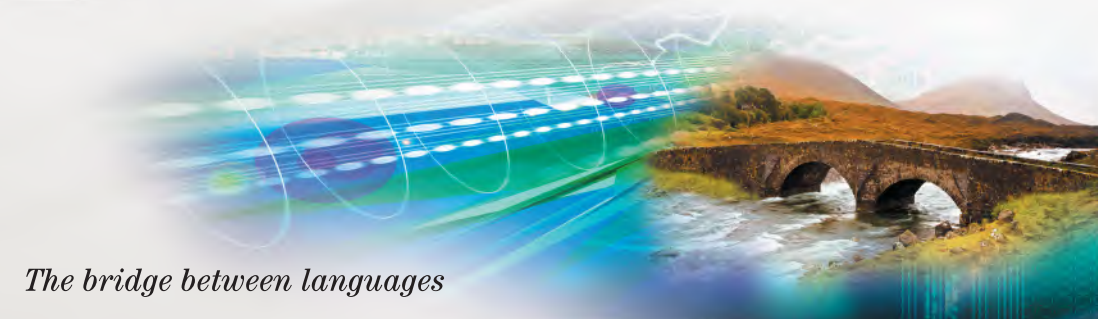


SYNERGIES IN THE PROCESS OF ENTERING LANGUAGES IN THE METALINGUA SYSTEM

Introduction of languages is carried out against the Interlingua, called Metalingua. Since Metalingua is structured and open, it facilitates the introduction of vocabulary and rules. Metalingua works with concepts, which means that to insert a new language it is necessary to define the most appropriate word in that languages for each concept that Metalingua proposes. Once the new language has been entered, it becomes linked to all previously introduced concepts, as well as to those which will be introduced later.



Any difficulty in the process of entering new languages decreases exponentially as new languages are added. It takes advantage of synergies between languages.

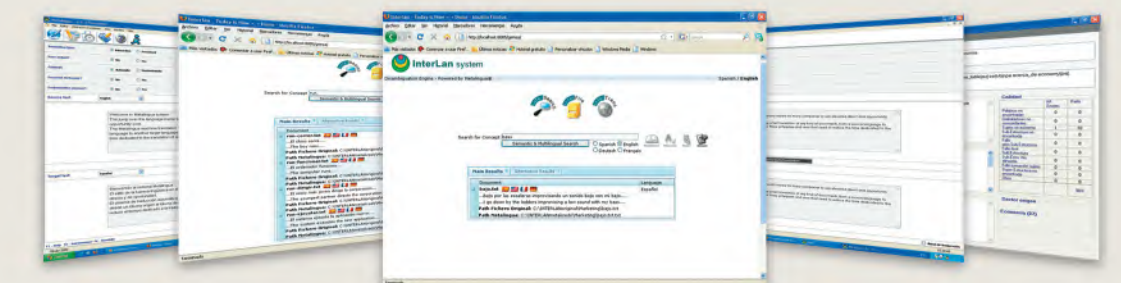


The bridge between languages



The bridge between languages

LINKING LANGUAGES LANGUAGE ENGINEERING

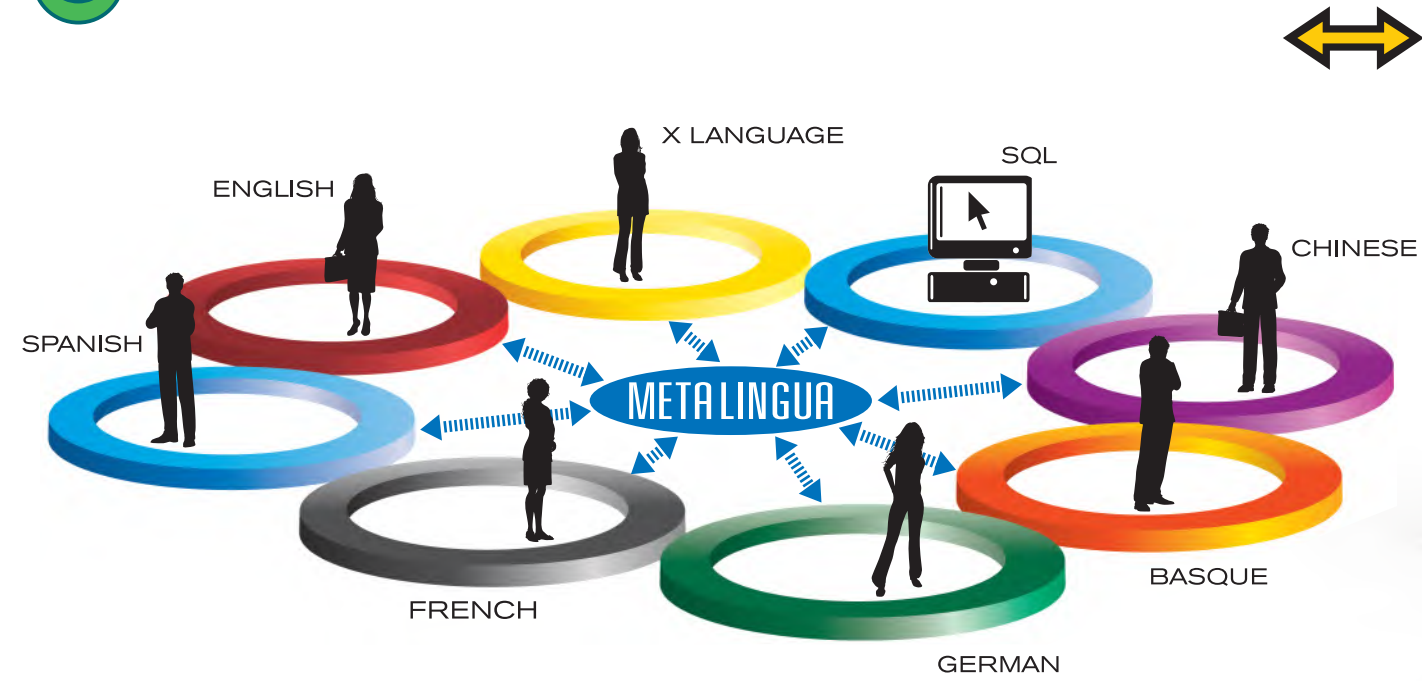


InterLan *
Legazpi nº 6
48950 Erandio-Bilbao
Bizkaia
Tel: +34 944 676 091
email: inter-lan@inter-lan.com
www.inter-lan.com

InterLan
Pº de la Castellana, 141
28046 Madrid
Tel: +34 902 440 088
email: inter-lan@inter-lan.com
www.inter-lan.com

InterLan US
Cambridge Innovation Center
One Broadway, 14th floor
Cambridge, MA 02142 USA
Tel: +1 (617) 401 3340
email: inter-lan@inter-lan.com
www.inter-lan.com





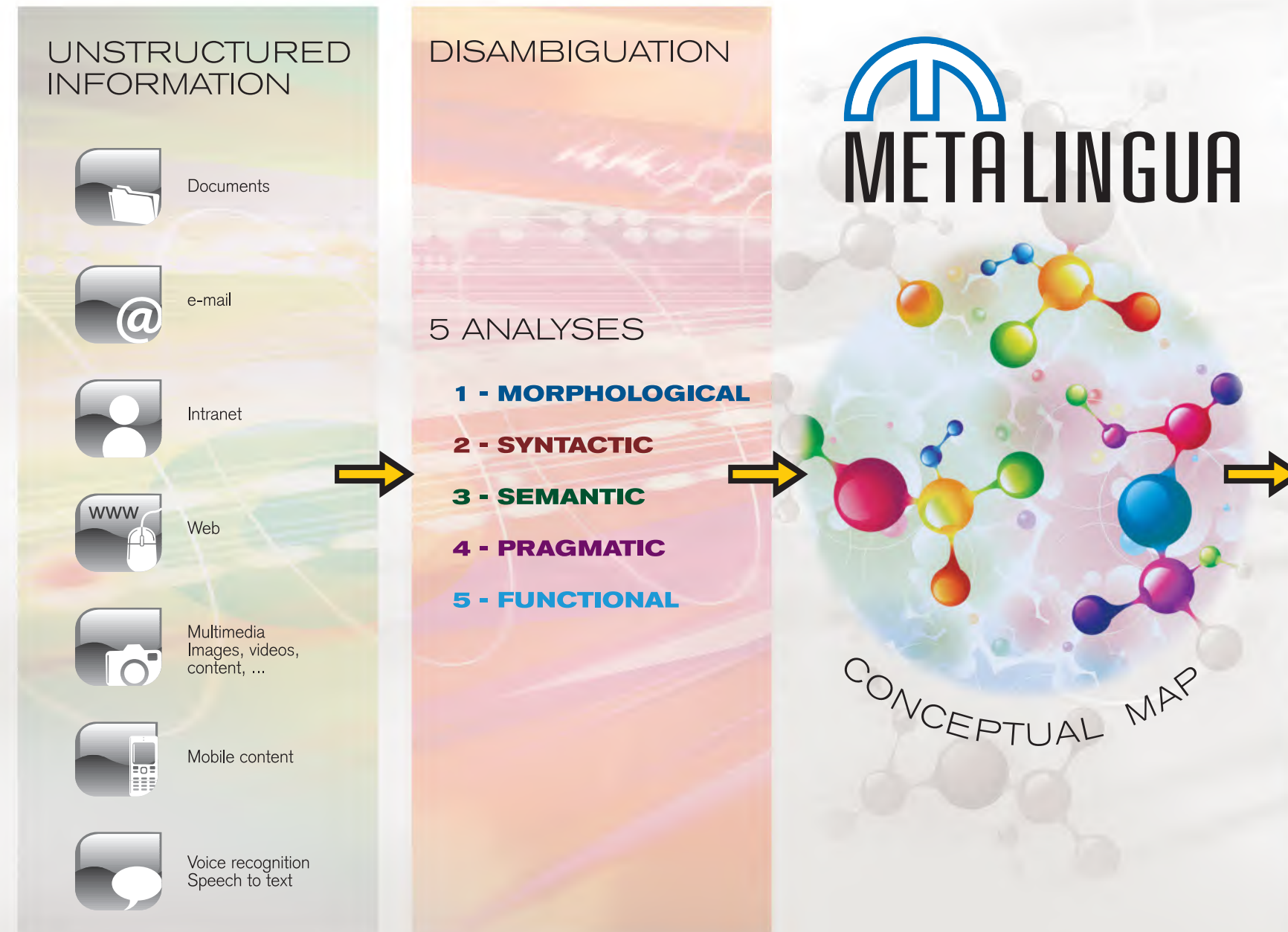
LINKING LANGUAGES

Metalingua leading-edge technology is a natural language intelligent processing engine and a knowledge representation system that is oriented to multilingual communications and multilingual content management.

Metalingua Techonlogy (patented) is an information automatic disambiguating engine.

Metalingua methodology makes multilingual communication possible by allowing translations from any source language to any target languages, including natural and artificial languages (SQL, etc.).

WEB 3.0



PRODUCTS AND USES BASED ON METALINGUA TECHNOLOGY

- SEMANTIC SEARCH
- MULTILINGUAL SEARCH
- MULTILINGUAL MACHINE TRANSLATION
- HUMAN MACHINE INTERACTION, NATURAL LANGUAGE PROCESSING, SQL, ...
- SEMANTIC ANNOTATION, DATA MINING, RDF, ...
- VOICE RECOGNITION
- MULTILINGUAL CONTENT MANAGEMENT SYSTEMS
- ...

SEMANTIC SEARCH

The system searches for concepts instead of words. The system understands meanings.

The requested concept is prioritized in the information retrieval. The system filters any unwanted information.

It can be connected to any Content Management System, or Web Search engine.

MULTILINGUAL SEARCH

You can use your mother tongue to search for concepts contained in documents in different languages. The system shows the information in the user's language and a copy of the original in the source language.

It can be connected to any Content Management System, or Web Search engine.

MULTILINGUAL MACHINE TRANSLATION

The system performs 5 analyses. After those analyses, the meaning is disambiguated and represented in Metalingua ready to synthesize it into the target languages or dialects. The system accepts documents in different formats: Word, PDF, XML, HTML, Power point, Excel,...

The system is also ready to create, use and store translation memories and customized dictionaries.

HMI, NATURAL LANGUAGE PROCESSING, SQL, ...

Metalingua system processes natural language and translates from any language to non-human languages, or machine languages such as SQL, SPARQL, etc. Interfaces for robotics and automation.

SEMANTIC ANNOTATION, DATA MINING, RDF, ...

One of the functionalities of the system is Semantic Annotation, RDF, etc. After the language is processed, the system analyzes the content and it returns its semantic annotation.